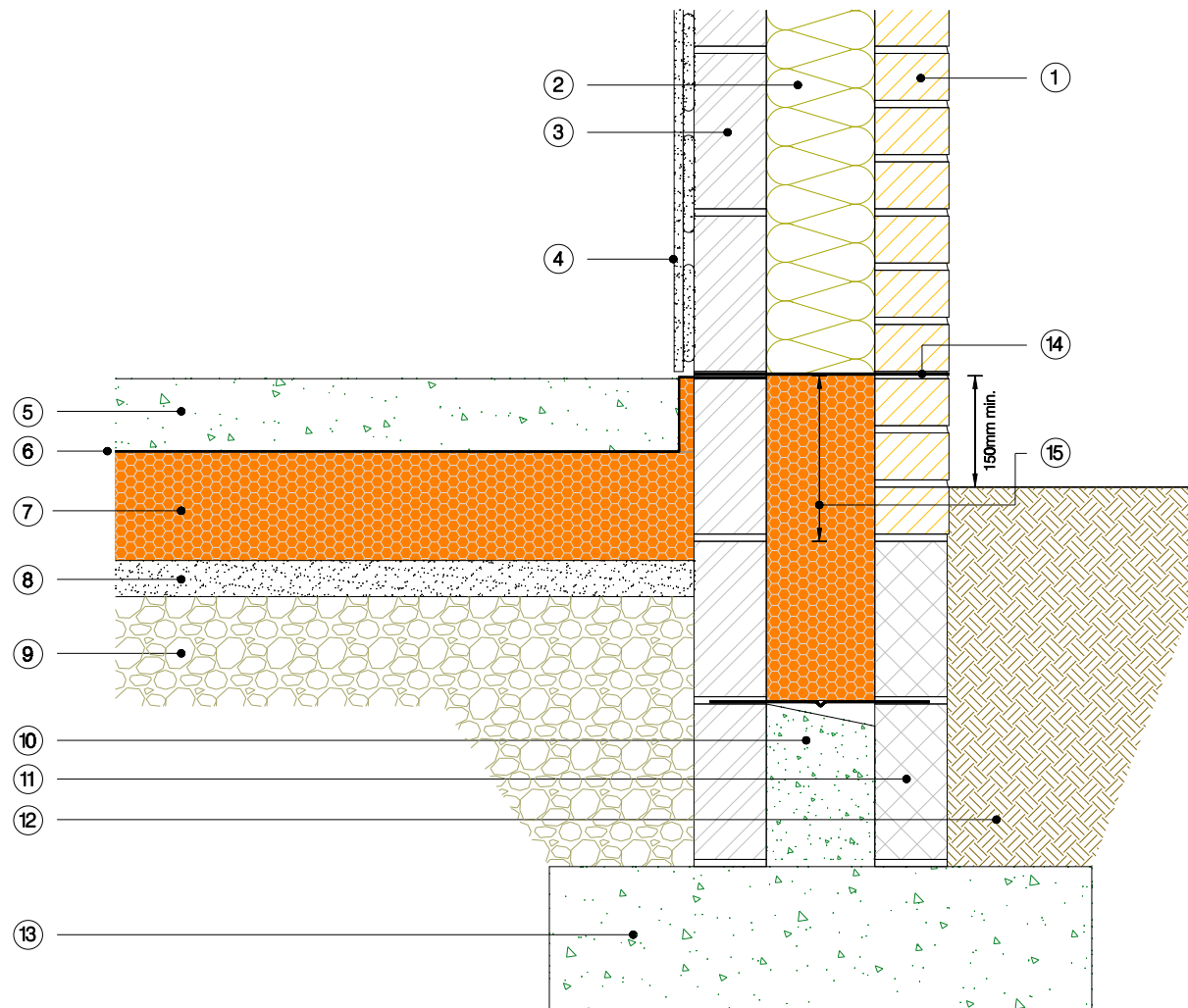


Key

- ① Brickwork
- ② Full fill insulation
- ③ 100mm lightweight block
- ④ 12.5mm plasterboard on 15mm thick plaster dabs
- ⑤ 100mm concrete slab
- ⑥ Damp proof membrane (DPM)
- ⑦ 150mm Polyfoam XPS floor insulation
- ⑧ 50mm sand blinding
- ⑨ 150mm compacted hardcore
- ⑩ Concrete infill
- ⑪ 100mm medium density block
- ⑫ Earth
- ⑬ Concrete foundation
- ⑭ Damp Proof Course (DPC) spanning the full cavity must be a minimum of 150mm above the ground level
- ⑮ Insulation within the cavity should extend a minimum 225mm below top of perimeter upstand insulation (Item 13) but can be extended further to improve the thermal efficiency of the junction detail



Note:

Detail to be read in conjunction with Section 3.5 of Polyfoam XPS' White Paper on the use of Polyfoam XPS Below DPC in Cavity Walls.